

PART OF THE E. 1/2 OF SECTION 23, & THE NW. 1/4 OF SECTION 24, T.6N., R.1E., S.L.B. & M.

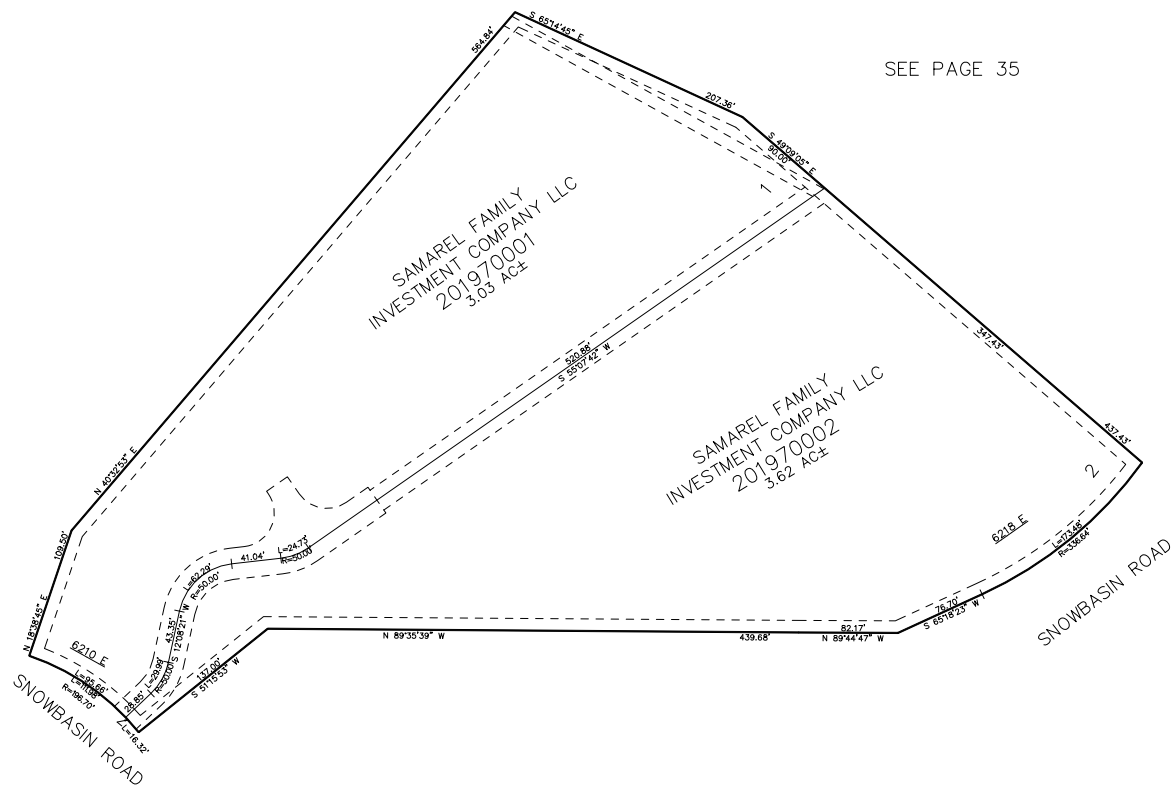
197

SAMAREL SUBDIVISION

IN WEBER COUNTY

TAXING UNIT: 520

SCALE 1" = 80'



10' UTILITY & DRAINAGE EASEMENTS EACH
SIDE OF PROPERTY LINES AS INDICATED
BY DASHED LINES EXCEPT AS OTHERWISE
SHOWN.

FOR COMPLETE SURVEY DATA SEE
ORIGINAL DEDICATION PLAT IN
BOOK 96, PAGE 68 OF RECORDS.